

VILLAGE OF CARMANGAY
 SEC 32, TWP 13, RGE 23, W4M & PTN
 NE 1/4 SEC 31, TWP 13, RGE 23, W4M

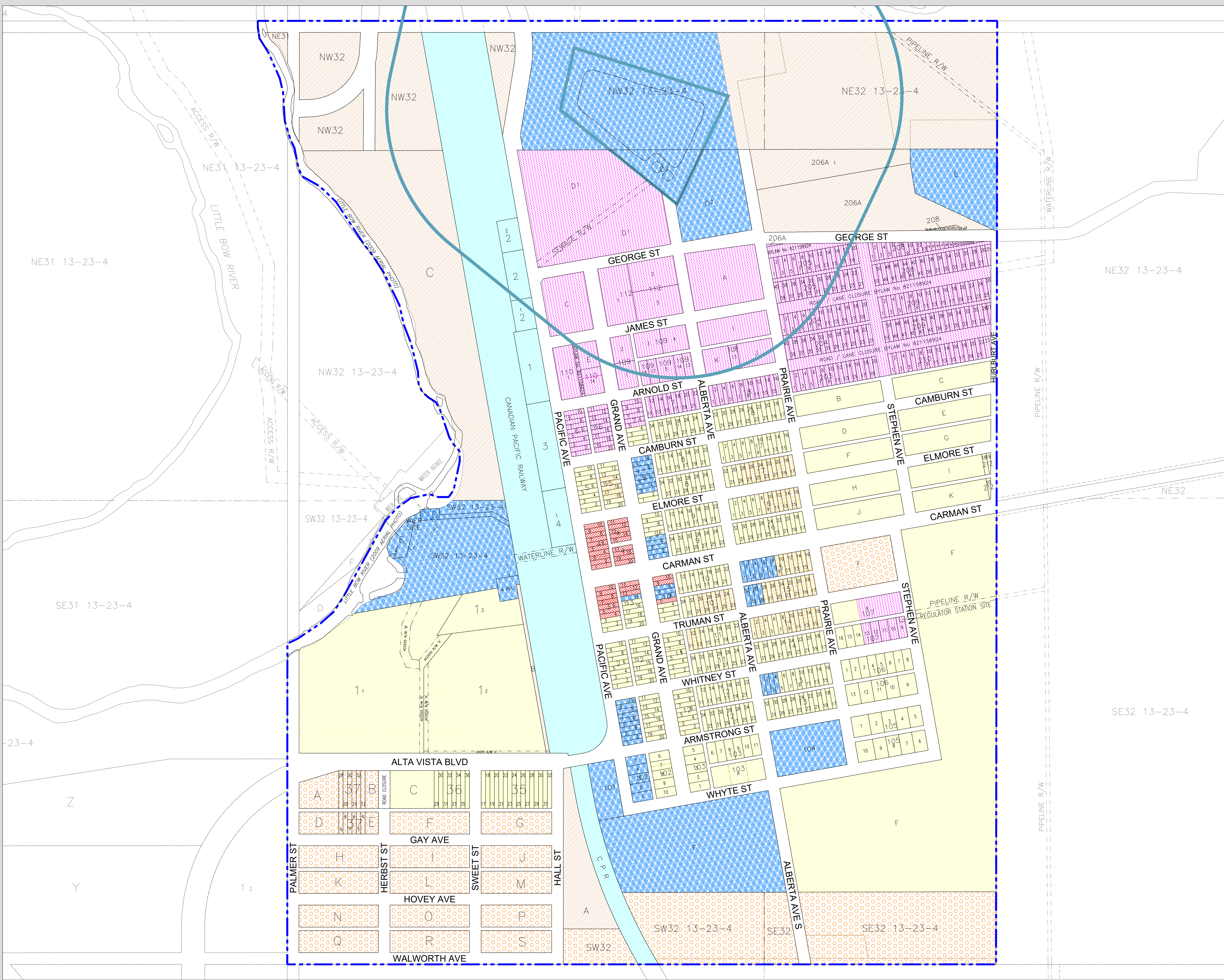
LAND USE DISTRICTS

BYLAW NO: 742, MAY 21, 2013
 With Amendments To And Including Bylaw 851

	Residential	R
	Residential Small Home Lot*	RSHL*
	Country Residential	CR
	Manufactured Home	MH
	Commercial	C
	Public	P
	Railway	RY
	Industrial	I
	Urban Reserve	UR

300m Sewage Lagoon Buffer

*No Zoning at this Time



MAP PREPARED BY:
 OLDMAN RIVER REGIONAL SERVICES COMMISSION
 3105 16th AVENUE NORTH, LETHBRIDGE, ALBERTA T1H 5E8
 TEL: 403-329-1344
 NOT RESPONSIBLE FOR ERRORS OR OMISSIONS

